



EMERGING
LEADERS
OF GAMING



Breaking It Down: Sports Betting Partnerships & Market Access

Please stand by. The webinar will begin at 1:00 p.m. ET.



Brief Technical Overview



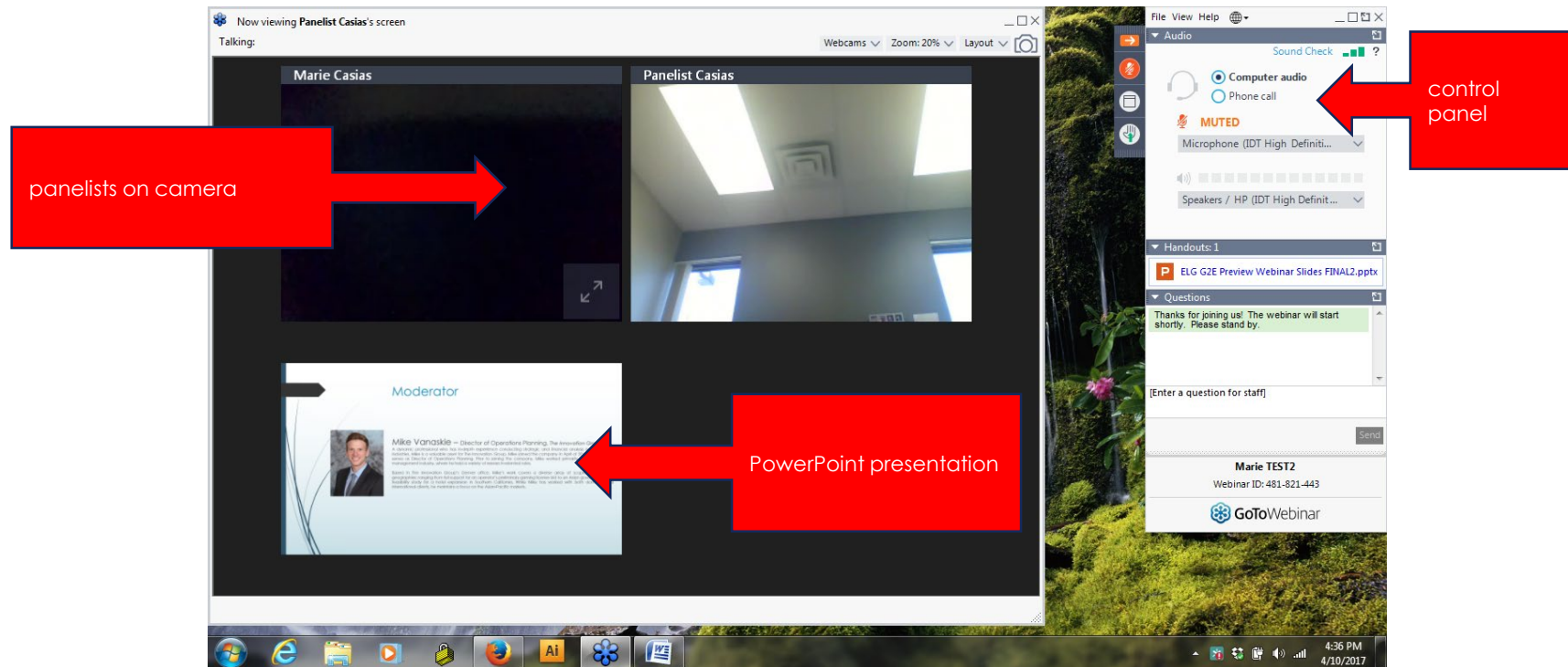
Marie Casias

Manager, Marketing & Administration
The Innovation Group

Need Help?
Call 877-582-7011

Windows & Control Panel

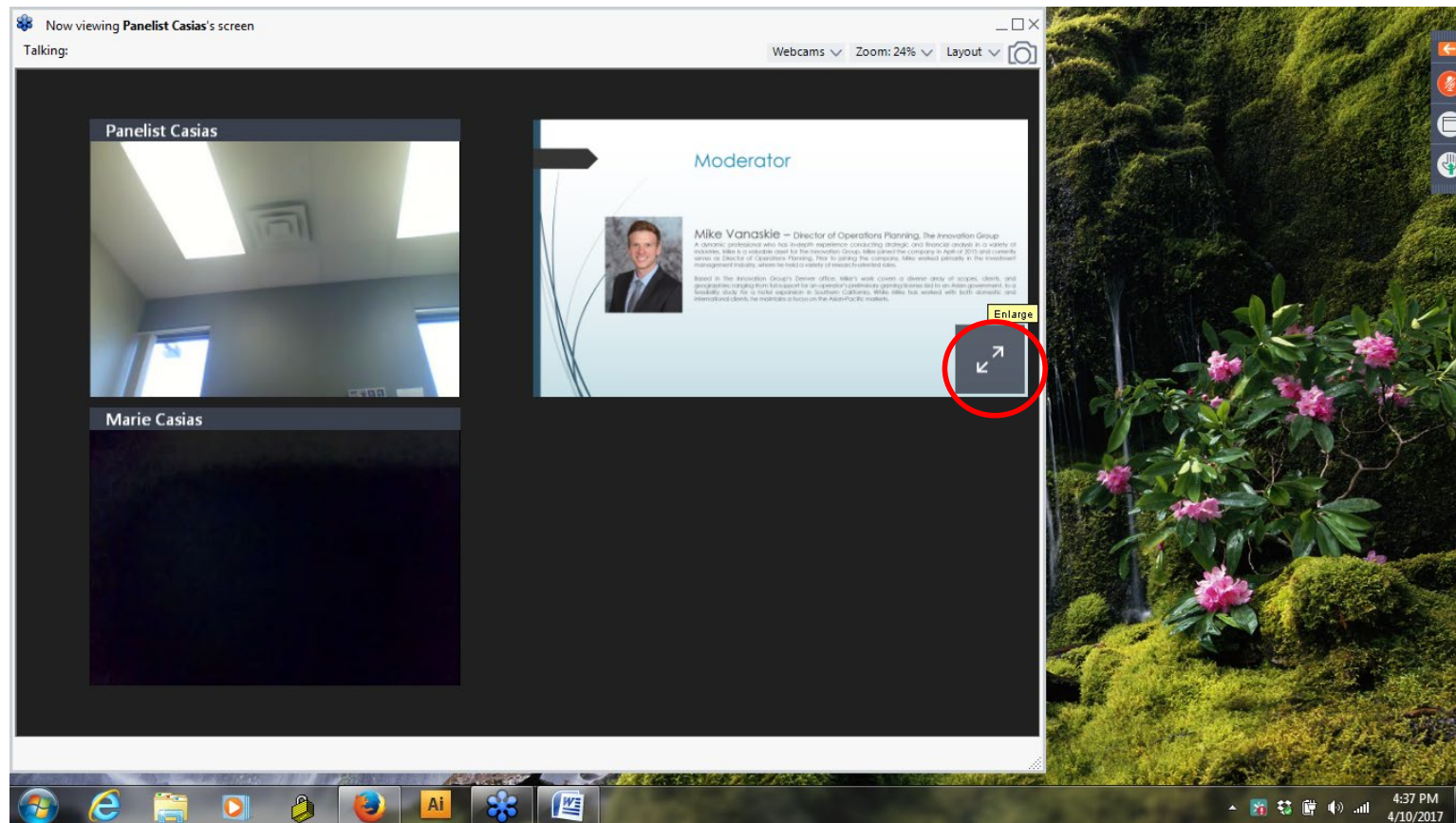
Once we are broadcasting, your screen should show the panelists' camera windows and a PowerPoint presentation window, as well as the control panel on the right.



Need Help?
Call 877-582-7011

Expanding Windows to Full-Screen

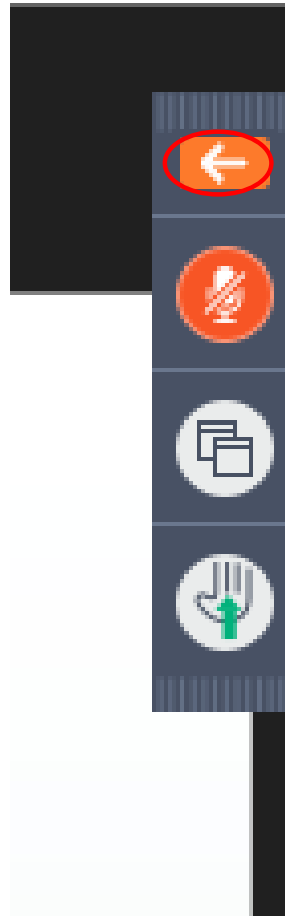
Hover over the bottom right corner of any window and you'll see the "enlarge" option with two pointing arrows. Click on that, and you'll go to full-screen for that window. To get out of full-screen, hit ESC or the double arrows again.



Need Help?
Call 877-582-7011

Minimize/Maximize Control Panel

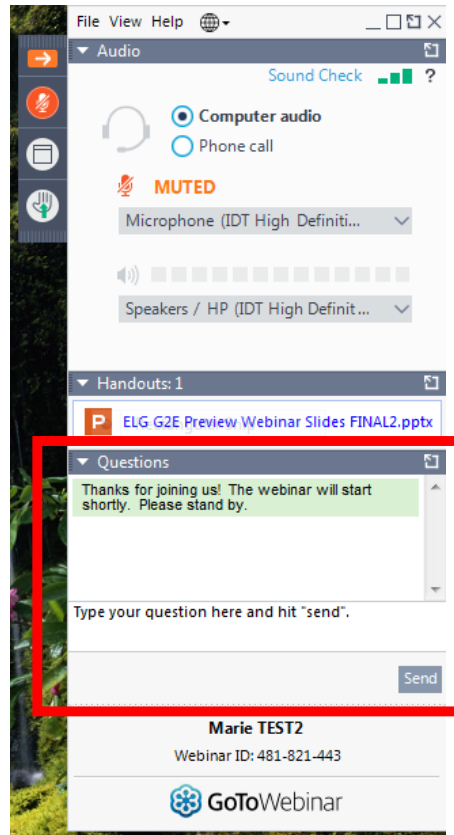
Your control panel starts in an automatically maximized setup but you can minimize it by clicking the orange arrow at the top.



Need Help?
Call 877-582-7011

Ask a Question

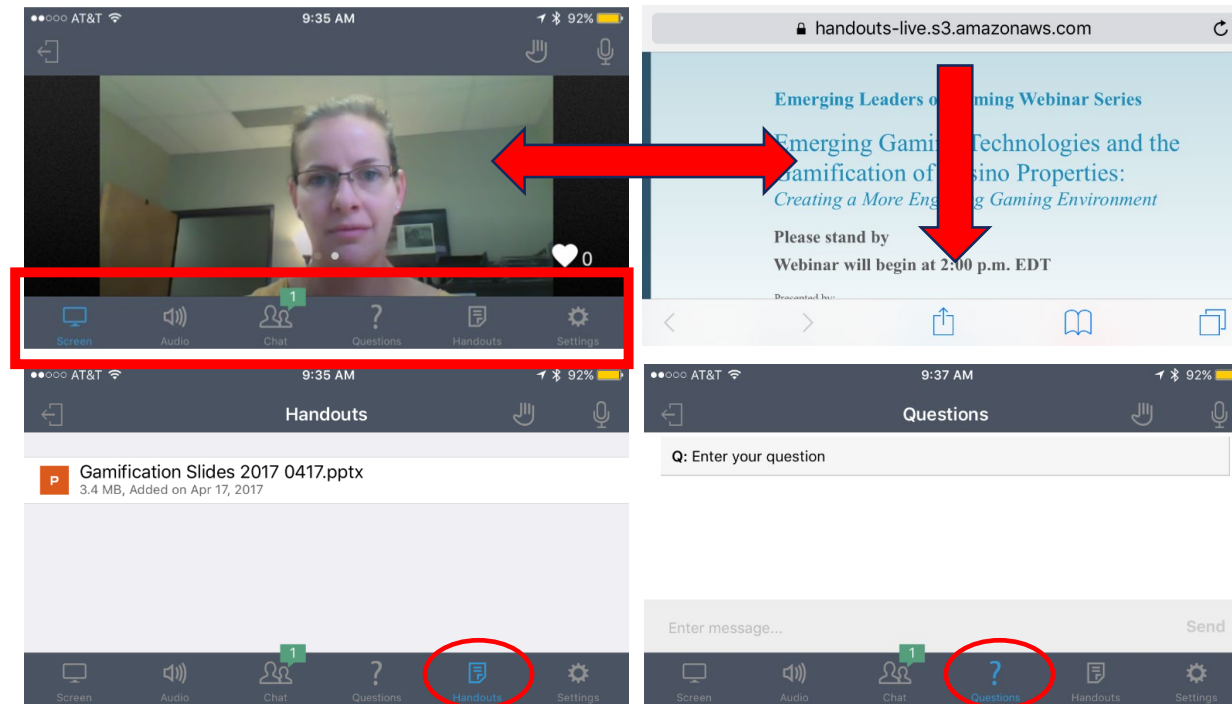
We will field questions throughout the course of the webinar. Please make sure your control panel is maximized and type yours into the “Questions” field towards the bottom, then hit SEND.



Need Help?
Call 877-582-7011

Attending via Mobile Phone?

Your menus are at the bottom. Toggle between cameras and the presentation (“handout”) by swiping left & right. Continue through the presentation by swiping down. Although you won’t be able to see our live presentation, you can follow along at your own speed in the “handouts” section.



Need Help?
Call 877-582-7011

Frequently Asked Questions

Technical Issues? Call Customer Service at 877-582-7011 (or internationally, +1 805-617-7370)

A recording of the webinar will be provided within a few weeks of it, and available on our [Emerging Leaders page](#).

Breaking It Down:

Sports Betting Partnerships & Market Access



Chris Grove

Managing Director
Eilers & Krejcik Gaming



Dan Kustelski

Co-founder & CEO
Chalkline Sports



Brian Wyman

Sr. Vice President
The Innovation Group



BETTING_{ON}SPORTS ★ AMERICA ★

ATTEND OUR SESSIONS | WEDNESDAY, APRIL 24

2:45 – 3:30 PM | CONFERENCE ROOM 1

TRIBAL VIEW – HOW DO TRIBES SEE THE SPORTS BETTING OPPORTUNITY?

One of the biggest topics for debate. How will the tribes respond to the sports betting revolution in a gaming arena where exclusivity and compacts are the order of the day?

with speaker Brian Wyman

10:15 – 11:00 AM | CONFERENCE ROOM 3

DEFINING THE AMERICAN SPORTS BETTING CUSTOMER

Chris Grove of Eilers & Krejcik shares some of the findings from the firm's latest research into the U.S. betting market and the potential audience it is hoping to entertain.

with speaker Chris Grove

VISIT WWW.SBCEVENTS.COM TO FIND BOSA AND REGISTER

“Meet a Mentor” at NIGA with Emerging Leaders of Gaming

WEDNESDAY, APRIL 3

4:00 – 5:00 PM | Chairman’s Lounge | Trade Show Floor | Hall D

Join ELG and NIGA to close out Day 1 of the trade show at Indian Gaming 2019. Enjoy drinks, hors d'oeuvres, peer-to-peer networking and the opportunity to meet leaders of the tribal gaming industry interested in supporting your professional development. Also learn more about TIG's recently expanded [Native American Internship Program](#) for tribal professionals in the gaming sector. Convention registration is required to access this event, but no RSVP is required.



AT





Thank You.

Please take our survey after this webinar, and visit our website to join our mailing list, follow us on social media, or see videos of our past webinars.



Brian Wyman



702 852 1150



bwyman@theinnovationgroup.com



www.theinnovationgroup.com